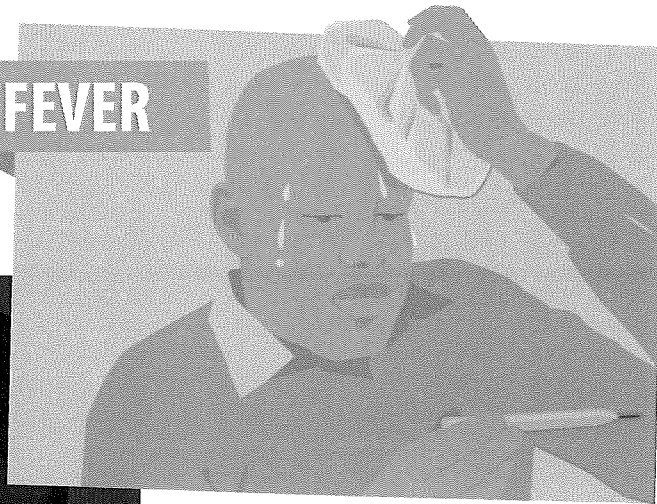


SYMPTOMS OF CORONAVIRUS DISEASE 2019

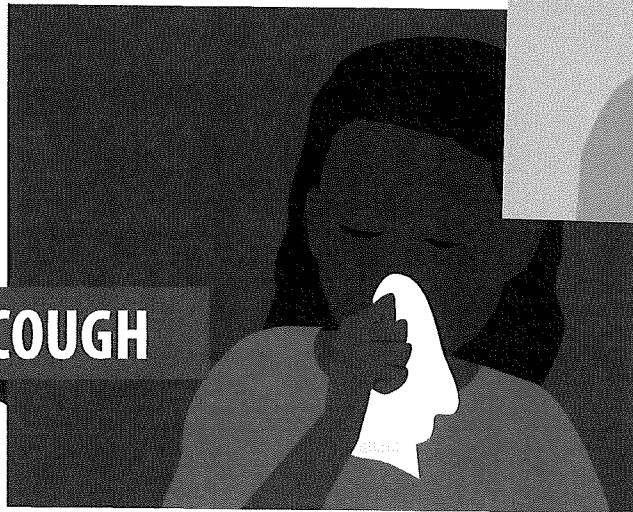
Patients with COVID-19 have experienced mild to severe respiratory illness.

Symptoms* can include

FEVER



COUGH



***Symptoms may appear 2-14 days after exposure.**

Seek medical advice if you develop symptoms, and have been in close contact with a person known to have COVID-19 or if you live in or have recently been in an area with ongoing spread of COVID-19.

SHORTNESS OF BREATH



For more information: www.cdc.gov/COVID19-symptoms